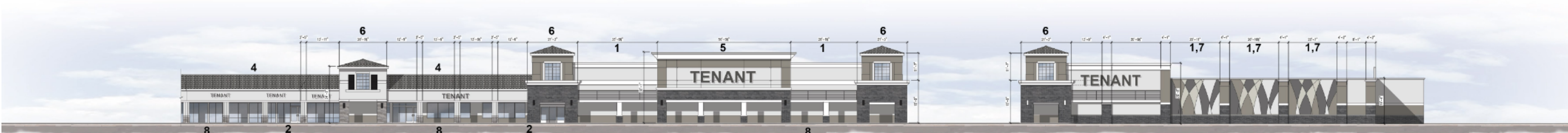
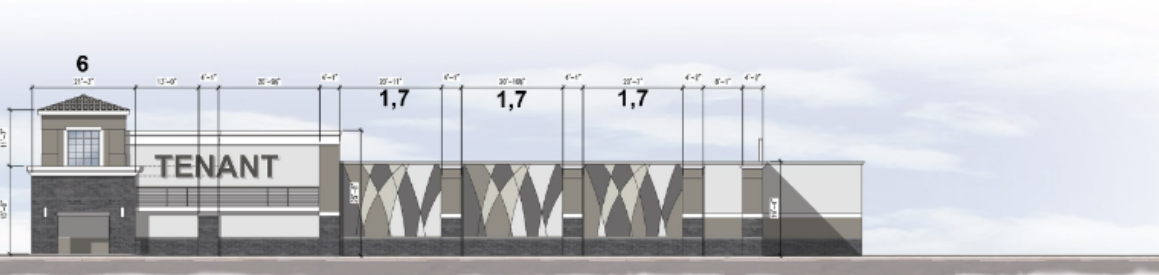


① Front Elevation - Parking Lot - Intersection

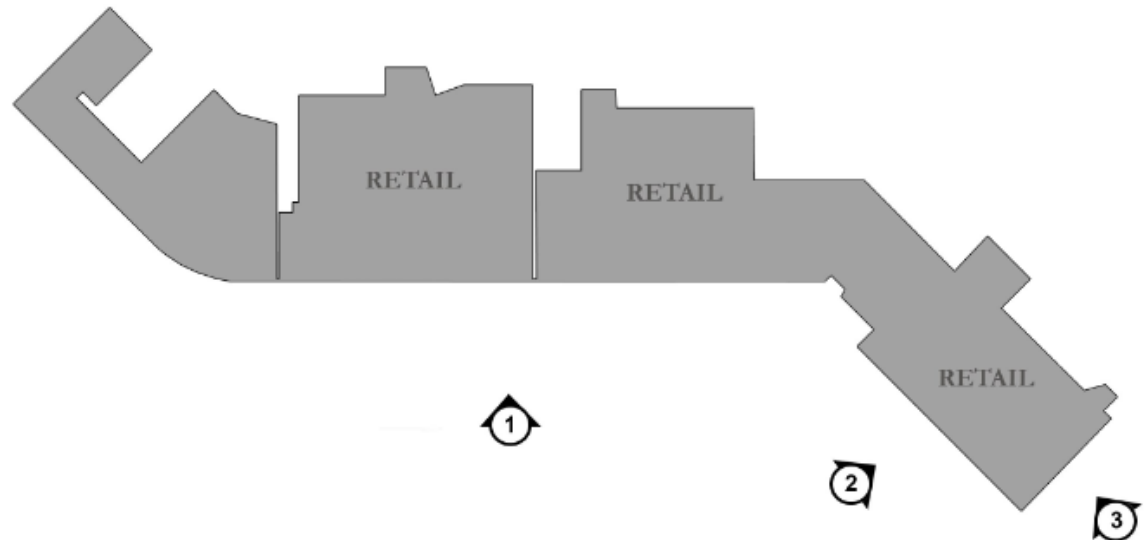
For illustration purposes only.



② Front Elevation - Parking Lot - Federal Hwy



③ Front Elevation - NE 36TH St



Tenants shall be allowed to keep the existing signage up until the point of removal.
Once a sign is removed or a structure is altered the new tenant sign will have to meet the regulations found within this master sign plan.
The re-face or repair of a non-conforming sign will be allowed without bringing sign into conformance.

Signs utilizing legally registered and recognized logos, trademarks or letter styles and colors that differ from the shoppers have in shopping center's sign criteria guidelines maybe allowed subject to approval by the planning and zoning department of Pompano beach, and the landlord.